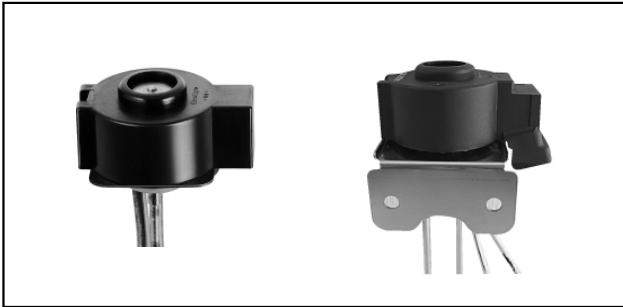


Motor Drive Units Valve Control Units NSCE

■ NSCE



■ Applications

Refrigerant valve of refrigerator

■ Feature

Fine adjustment control and multi port

Low noise & hi-functions by stepping motor

■ Specifications

Motor drive part	Rated voltage	DC12V
	Current input	700mA or less
	Excitation	1-2 phase excitation, uni-polar 30pps±2
Valve parts	Port	Multi port
	Standard operation	2~9 modes
		3-ways: Open-Close, Close-Close, Open-Open 4-ways: Open-Close-Close, Close-Open-Close, Close-Close-Open
	Max. operation pressure difference	1.77MPa
	Airtight test pressure	1.77MPa
	Strength test pressure	6.86MPa
Operating fluid	R134a・R600 + freezing machine oil	
Basic placement	±15° at vertical direction which a pipe should be kept downward.	
Operating temperature	-10~70°C	

NIDEC SANKYO CORPORATION

For additional information, please contact our sales.

Tokyo Office

Nidec Tokyo Bldg., 1-20-13 Osaki, Shinagawa-ku, Tokyo 141-0032, Japan Tel:(81)3-5740-3000